

Flagstaff

MAC, SE, CLASSIC, HIGH WALL
& HARD SIDE CAMPER



Flagstaff

MAC, SE, CLASSIC, HIGH WALL
& HARD SIDE CAMPER





207



MAC

YES, YOU'RE CAMPING, BUT THAT DOES NOT MEAN YOUR COMFORT STAYS HOME. Available features like the three-speed ventilation fan to pull in fresh outside ambient air through open windows so you remain comfortable at night and swing level galley to keep kitchen utensils in their place are simple amenities that add tremendously to the comfort of your vacation. It's your vacation. Do it right.

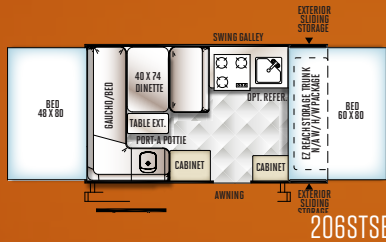


MODEL	206ST	205	207	208	227	228	228BH	228D	246D	176LTD	206LTD
UNLOADED VEHICLE WEIGHT *	2062	1959	1834	1853	2072	2218	2280	2312	2552	1380	1538
BASE DRY HITCH WEIGHT	242	231	242	242	258	336	376	314	246	176	188
BASE DRY AXLE WEIGHT	1820	1728	1592	1611	1814	1882	1904	1998	2306	1204	1350
CARGO CAPACITY	1161	1253	1389	1370	1167	1099	1077	983	675	937	791
BOX SIZE	10'	10'	10'	10'	12'	12'	12'	12'	14'	8'	10'
TRAILER SIZE (Closed w/ Hitch)	17' 1"	15' 3"	15' 3"	15' 3"	17' 2"	17' 2"	18' 8"	17' 2"	19' 2"	12'	14'
HEIGHT (Closed)	57"	57"	57"	57"	57"	57"	57"	57"	57"	56"	56"
TRAILER LENGTH (Open)	20' 4"	20' 1"	20' 1"	20' 1"	23' 10"	23' 10"	23' 10"	23' 10"	25' 10"	17' 1"	20' 1"
FRESH WATER CAPACITY	20	26	20	20	26	26	26	26	26	11	11

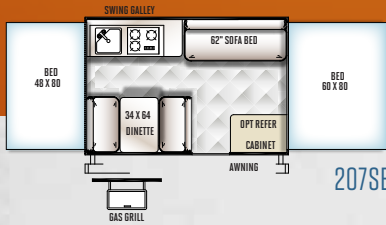
The Unloaded Vehicle Weight (UJVW) listed represents the weight of one trailer with that model's standard equipment including the content of specified Option Packages. * See back cover for further specification definitions.

FLAGSTAFF

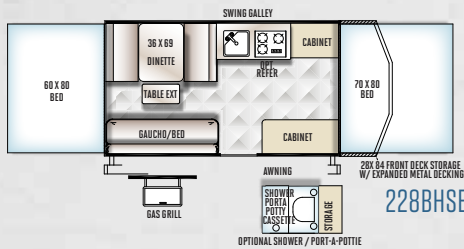
SPORTS ENTHUSIAST PACKAGE



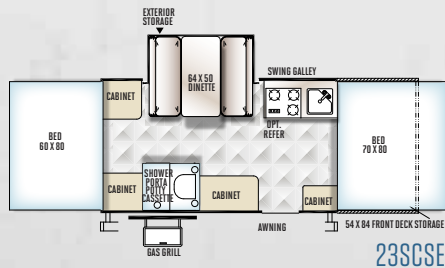
206STSE



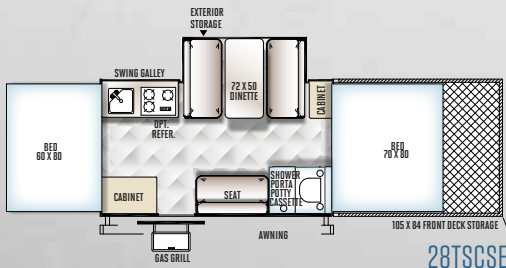
207SE



228BHSE



238CSE



28TSCSE

Introducing the Flagstaff Sports Enthusiast package (SE), a camper designed for active couples and families that embrace the many outdoor sports activities that are popular today. Whatever the preference; mountain biking, canoeing, paddle boarding or surfing, the SE camping trailers are designed to allow you to make the most of your outdoor experience.

Spacious comfort with features important to you

The durable leather appearance seating, attractive Driftwood cabinets and rustic wood-look flooring, give the interior a resilient, yet refined appeal. Interior features targeted for the modern, active lifestyle include a Digital Media Receiver with Blue Tooth, MP3 player USB and auxiliary ports, recharging station with (2) additional USB ports, LED interior lighting, optional air conditioning prep and "off the ground" spacious beds with quilted-top heated mattresses.

Cargo carrying versatility

No more need to overload vehicles or to leave equipment behind. The Flagstaff SE camper features ProRac Systems, Inc. permanent mount cross bars that provide a load-bearing surface for securing up to 150 lbs. of a wide variety of outdoor sports equipment. It is easy to reach and adjustable to provide unmatched cargo carrying flexibility. Additional storage options like a front storage deck and front storage trunk are available on select models.

Stylishly rugged exterior with huge ground clearance

The Brushed Nickel exterior features chrome diamond plate skirting, distinctive fender flairs and 15" Mud Rover Radial Tires with Aluminum Wheels that provides for 12" ground clearance allowing you to get your gear where it needs to go. Other exterior features include a roof mount exterior LED light strip; Toy Lock frame mounted locking system and Spray Away utility hose.

MODEL	206STSE	207SE	228BHSE	238CSE	28TSCSE
UNLOADED VEHICLE WEIGHT *	2249	2139	2430	2835	3224
BASE DRY HITCH WEIGHT	250	283	407	310	219
BASE DRY AXLE WEIGHT	1999	1856	2023	2525	3005
CARGO CAPACITY	1000	800	1000	956	1950
BOX SIZE	10'	10'	12'	12'	12'
TRAILER SIZE (Closed w/ Hitch)	17' 1"	15' 3"	18' 8"	21' 9"	26'
HEIGHT (Closed)	66"	66"	66"	66"	66"
TRAILER LENGTH (Open)	20' 4"	20' 1"	23' 10"	26' 5"	30' 8"
FRESH WATER CAPACITY	20	20	26	26	26

The Unloaded Vehicle Weight (UVW) listed represents the weight of one trailer with that model's standard equipment including the content of specified Option Packages. * See back cover for further specification definitions.





206STSE





627D

FLAGSTAFF

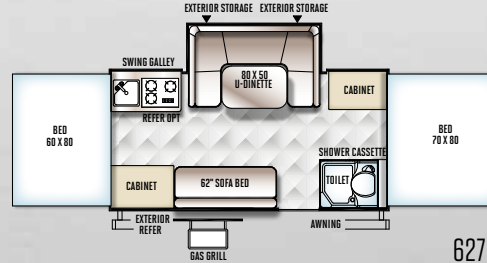
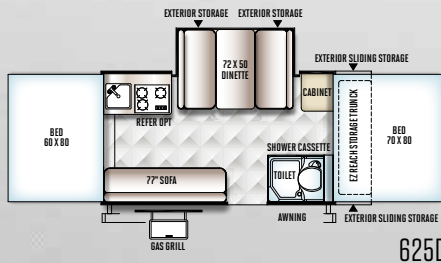
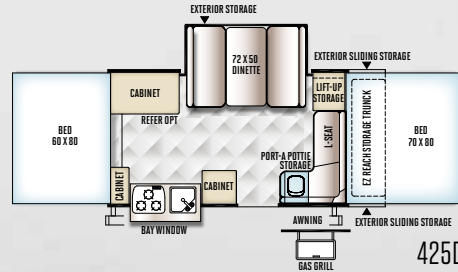
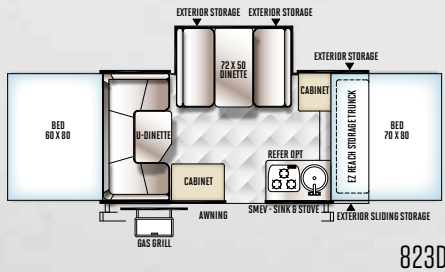
CLASSIC

THE FLAGSTAFF CLASSIC IS THE TOP TENT CAMPER ON THE MARKET

TODAY. The expansive EZ Reach storage trunk for that extra cargo space, a comfortable, heated, inner-spring mattress, for a peaceful night's sleep, large slide out dinette for a more spacious interior and the convenient power lift system for easier setup are some of the basic features that really make your camper a Classic.



CLASSIC



MODEL	823D	425D	625D	627D
UNLOADED VEHICLE WEIGHT *	2610	2678	2717	2773
BASE DRY HITCH WEIGHT	340	302	296	380
BASE DRY AXLE WEIGHT	2270	2376	2421	2393
CARGO CAPACITY	711	605	560	588
BOX SIZE	12'	12'	12'	14'
TRAILER SIZE (Closed w/ Hitch)	19' 1"	19' 1"	19' 1"	19' 1"
HEIGHT (Closed)	61"	61"	61"	61"
TRAILER LENGTH (Open)	23' 9"	23' 9"	23' 9"	25' 9"
FRESH WATER CAPACITY	26	26	26	26

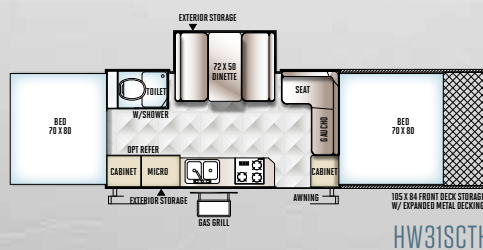
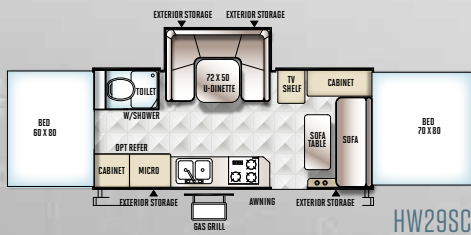
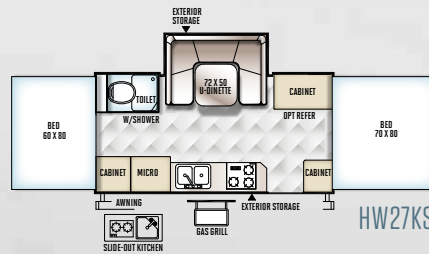
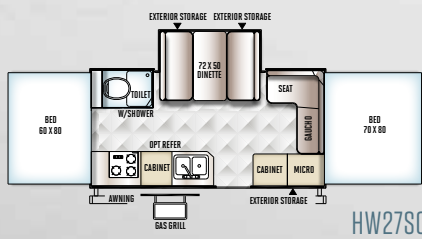
The Unloaded Vehicle Weight (UVW) listed represents the weight of one trailer with that model's standard equipment including the content of specified Option Packages.

* See back cover for further specification definitions.

FLAGSTAFF

HIGH WALL

KISS THE CAMPGROUND BATH HOUSE GOODBYE. Welcome to the Flagstaff High Wall Series. We have designed this series for the camping family who wants the refinement of larger vacationing units in a light-weight camper. Ample counterspace, upgraded appliances, convenient pull-up curtains providing a wide view of the surroundings and tasteful interiors make this camper a gorgeous option to experience.



MODEL	HW27SC	HW27KS	HW29SC	HW31SCTH
UNLOADED VEHICLE WEIGHT *	3149	3276	3651	3925
BASE DRY HITCH WEIGHT	278	377	371	404
BASE DRY AXLE WEIGHT	2871	2899	3280	3521
CARGO CAPACITY	591	563	1311	1963
BOX SIZE	14'	14'	16'	14'
TRAILER SIZE (Closed w/ Hitch)	19' 4"	19' 4"	21' 4"	28' 4"
HEIGHT (Closed)	71"	71"	72"	72"
TRAILER LENGTH (Open)	25' 9"	25' 9"	27' 9"	33' 9"
FRESH WATER CAPACITY	26	26	26	26
GRAY WATER CAPACITY	12	12	12	12
BLACK WATER CAPACITY	12	12	12	12

The Unloaded Vehicle Weight (UVW) listed represents the weight of one trailer with that model's standard equipment including the content of specified Option Packages.
* See back cover for further specification definitions.



HW27SC



T12RB



FLAGSTAFF

HARD SIDE

QUITE POSSIBLY THE BEST OF BOTH WORLDS. When you combine the solid exterior of a travel trailer with a Classic tent camper, you get the Flagstaff Hard Side Series, giving your camping experience the best of both. Bringing a smooth, fiberglass vacuum bonded exterior with a quick, easy set up, while retaining the towing and storage advantages of a tent camper, the Hard Side camper is the perfect blend.

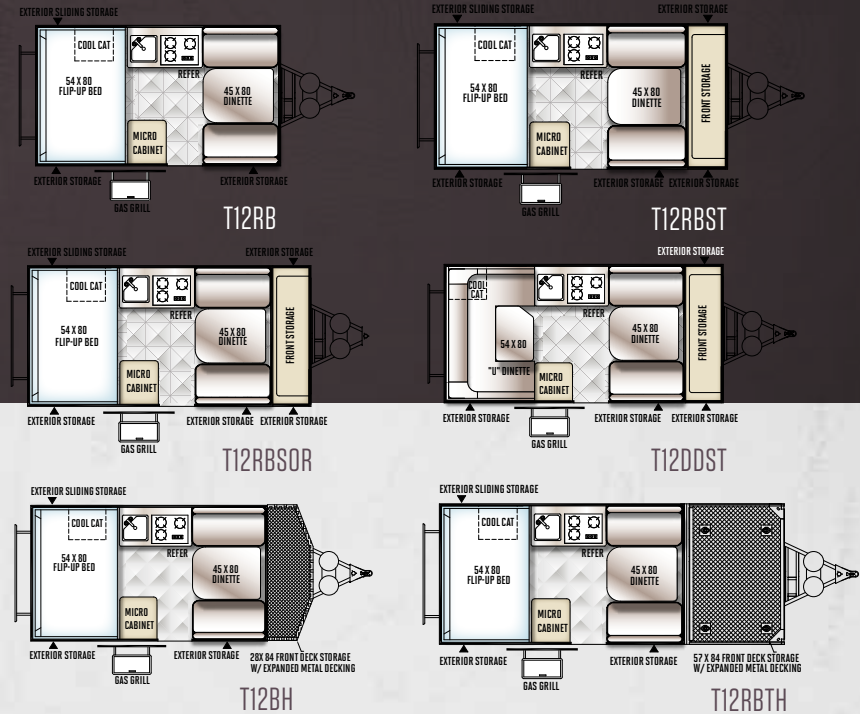


T12RB

MODEL	T12RB	T12RBST	T12BH	T12RBTH	T12RBSOR	T12DDST
UNLOADED VEHICLE WEIGHT *	2003	2095	2104	2354	2234	2093
BASE DRY HITCH WEIGHT	218	284	273	346	290	263
BASE DRY AXLE WEIGHT	1785	1811	1831	2008	1944	1830
CARGO CAPACITY	1177	1151	1131	1454	1518	1132
BOX SIZE	12'	12'	12'	12'	12'	12'
TRAILER SIZE (Closed w/ Hitch)	17' 1"	18' 11"	19' 2"	22' 1"	19' 1"	18' 11"
HEIGHT (Closed)	60"	60"	60"	65"	60"	60"
FRESH WATER CAPACITY	26	26	26	26	26	26

The Unloaded Vehicle Weight (UJV) listed represents the weight of one trailer with that model's standard equipment including the content of specified Option Packages.

* See back cover for further specification definitions.



Gas Strut Lift Assist
(Std. Hard Side Models w/ Manual Lift Roof Only)



Molded LP Bottle Covers
(Std. All Hard Side Models, High Wall Only)



Hard Side and Hard Side High Wall Awning & Screen Room option shown on T12RBST.

HARD SIDE



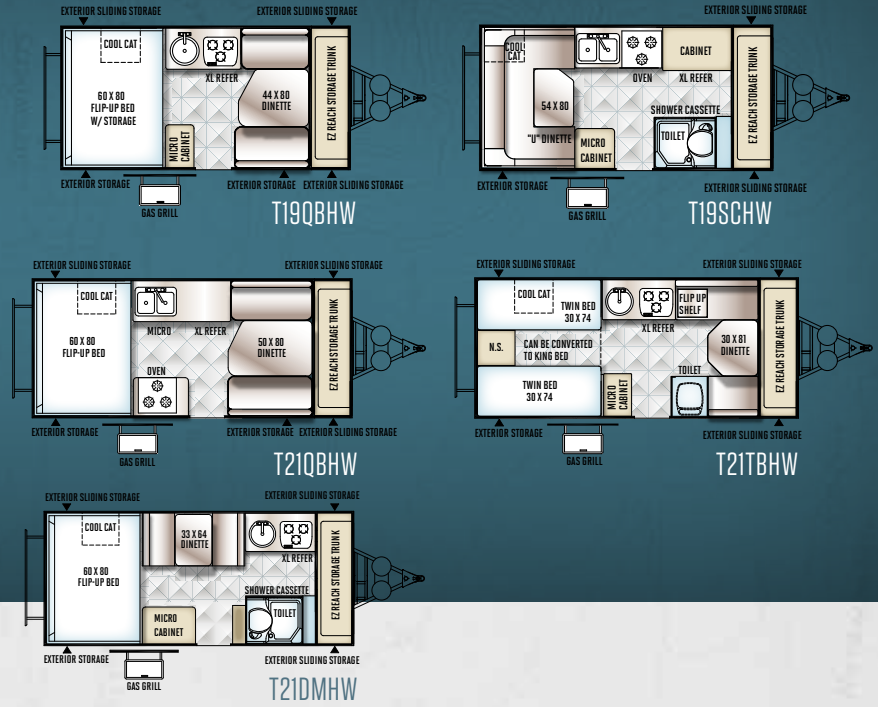
T21DMHW



FLAGSTAFF

HARD SIDE HIGH WALL

EVER GET MORE THAN YOU EXPECT? That is what you get with the Flagstaff Hard Side High Wall Series. What appears to be another easy to tow, convenient to store camping trailer transforms into a fully equipped camper with many of the amenities commonly found in today's travel trailers.



HIGH WALL HARD SIDE



Power Roof Lift Assist
(Std. T19QBHW, T19SCHW, T21QBHW, T21TBHW, T21DMHW Only)

MODEL	T19QBHW	T19SCHW	T21QBHW	T21TBHW	T21DMHW
UNLOADED VEHICLE WEIGHT*	2246	2322	2519	2461	2608
BASE DRY HITCH WEIGHT	331	325	336	306	382
BASE DRY AXLE WEIGHT	1915	1997	2183	2155	2226
CARGO CAPACITY	1047	965	779	807	736
BOX SIZE	12'	12'	14'	14'	14'
TRAILER SIZE (Closed w/ Hitch)	18' 11"	18' 11"	20' 10"	20' 10"	20' 10"
HEIGHT (Closed)	66"	66"	67"	67"	68"
FRESH WATER CAPACITY	26	26	26	26	26

The Unloaded Vehicle Weight (UJV) listed represents the weight of one trailer with that model's standard equipment including the content of specified Option Packages.

* See back cover for further specification definitions.



T21DMHW



K

Dometic

B

P

C

A

F

Flagstaff
CLASSIC

N

O

H

I

G

M

L

D

FLAGSTAFF

CONSTRUCTION



- A Three Stage Double Arm Lifter Posts (NA Hard Side)
- B Fiberglass Vacuum Bonded Radius Roof w/ No Center Seam (NA Hard Side)
- C Five-Piece Vinolon Supreme Tenting (NA Hard Side)
- D E-Z Crank Down Stabilizer Jacks w/Sand Pads
- E Full Perimeter Aluminum Bed Frames (NA Hard Side)
- F Plywood Bunk Ends (NA Hard Side)
- G Seven-Way Pigtail Wiring
- H Under Floor 20 Gallon Fresh Water Tank (LTDs 11 Gallon Above Floor)
- I Powder Coated Tubular Steel Frame
- J Powder Coated Rafter Poles and Bed Bows (NA Hard Side)
- K Air Conditioner Reinforcing Laminated Into Roof (NA Hard Side)
- L Nitrogen Filled Steel Belted Radial Tires
- M Easy Lube System (Except LTDs)
- N Smooth Fiberglass Vacuum Bonded Exterior (NA on Freedoms)
- O One-Piece Door (Except LTDs & Hard Side)
- P Under Awning LED Lighting (N/A LTD's & Hard Side.)



DEXTER TORFLEX

(Standard on Classic, High Wall and Hard Side Models)

- Independent wheel suspension and self-damping action
- Rubber cushioning eliminates metal-to-metal contact.
- Forged torsion arm for maximum strength

Most models are also equipped with E-Z Lube® System and Nev-R-Adjust® Brakes.



FLAGSTAFF

POPULAR FEATURES

A Toylok Mounted Locking System (Std. 228BH, 228BHSE, 233CSE, 28TSCSE, HW31SCTH, T12BH, T12RBTH Only)

B Heated Mattress (Std. Opt.)

C Swing Down Galley (Except LTDs, Hard Side, High Wall)

D Metal Full Extension Drawer Guides (Std.)

E Solar Panel Prep (Std. all models) The Zamp 40 amp. portable solar panel shown is sold separately.

F 3 Speed Ventilation Fan (Except LTDs.)

G Water Pump with Filter (Std.)

H Outside Grill with Work Table (Std. Mac, Classic, Hard Side, High Wall)

I Add-a-Room with Privacy Panels (Opt. all Models Except Hard Side)

J Power Lift (Std. Classic, High Wall 233CSE, 28TSCSE and Opt. MAC/LTD)

K Crank Down Stabilizer Jack (Std.)

L Easy Glide Scissorpole Bed Supports (Except LTDs)

- M** Bike Rack Option (Most Models)
- N** Under Awning LED Light (STD All Models Except LTD's and Hard Side)
- O** One-Piece Door (Except LTD's, Hard Side) and Large Entry Assist Handle (Except LTD's)
- P** Beautiful Hardwall Shower with a residential-style flush toilet complete with 12-gallon black and gray water holding tank and monitor panel. (Std. High Wall)
- Q** Hanging Wardrobe (Opt. all Models Except Mac, Hard Side & LTD's)
- R** Outside Shower (Incl. w/ Hot Water Pkg: Std: Classic, Hard Side, High Wall and Opt: Mac)
- S** AM/FM Stereo with CD Player (Std. Classic, Hard Side & High Wall, HW29SC Std. w/ AM/FM/CD Stereo with DVD Player)
- T** Easy Opening Deluxe Pull-up Curtains. (Std. Classic and High Wall)
- U** Double Entry Step (Std. 23SCSE, 28TSCSE, All HW Models, and Hard Side T21QBHW, T21TBHW, T21DMHW)
- V** Black Water Hose Storage (Std. HW models)
- W** LED Bunk Light (Std. Classic & High Wall)
- X** Molded LP Bottle Covers (Std. Hard Side, High Wall Only)
- Y** EZ Reach Storage Trunk (Some Models)
- Z** ProRac Roof Mounted Cross Bars w/ Opt. Bike and Kayak Carrier attachments. (All SE Models)



STANDARDS & OPTIONS



MODELS	LTD	M	SE	C	HW	HS	MODELS	LTD	M	SE	C	HW	HS	MODELS	LTD	M	SE	C	HW	HS
STANDARD & OPTIONAL FEATURES							Permanently Mounted 3-Burner Indoor Range w/ Glass Stove Top Cover	--	--	--	S	--	S	Interior Floor Lights	--	--	--	--	S	S
Cherry Interior with "Tile-Look" Linoleum	--	--	--	S	S	S	Three Burner Glass Top Stove with Oven (HS: T19SCHW, T21QBHW Only)	--	--	--	--	S	S*	2 Ceiling LED Lights and Jacks for Accessories	S	--	--	--	--	--
Hickory Interior with "Tile-Look" Linoleum	S	S	--	--	--	--	Microwave	--	--	--	--	S	S	2 Ceiling LED Lights	--	--	--	--	--	S
Driftwood Interior with "Wood-Look" Linoleum	--	--	S	--	--	--	Large Built-In Icebox	S	S	S	S	S	--	3 Ceiling LED Lights and Jacks for Accessories	--	S	S	S*	--	--
Two-Tone Fabric Seating	S	S	--	S	S	S	110V Electric Outside Accessible Refer (C: 627D Only)	--	--	--	S*	--	--	4 Ceiling LED Lights and Jacks for Accessories (C: 627D Only)	--	--	--	S*	S	--
"Leather Appearance" Seating	--	--	S	--	--	--	3 Way Refer 1.9 cu. ft.	0	0	0	--	--	--	Bunk LED Light with Fan	--	--	--	S	S	--
Residential Style Kitchen Faucet	S	S	S	S	--	S	3 Way Refer 2.5 cu. ft.	--	--	--	0	--	S	LED Bunk Light (M: 228D, 246D, SE: 23SCSE, 28TSCSE Only)	--	S*	S*	S	S	--
Stainless Steel Look Appliances and Sink	--	--	--	S	S	S	Extra Large 3 Way Refer (HS: T19SCHW, T19QBHW, T21QBHW, T21TBHW, T21DMHW Only)	--	--	--	--	0	S*	LP Leak/Carbon Monoxide Detector	S	S	S	S	S	S
Double Pan Sink with High Rise Faucet (HS: T19SCHW, T21QBHW Only)	--	--	--	--	S	S*	Free Standing Lite-Ply Table—High Pressure Laminate (Most Models)	S	S	S	S	S	S	Privacy Curtains	S	CP	CP	CP	CP	S
Electric Water Pump	S	S	S	S	S	S	Comfortable Family Style Dinette w/ 4" Cushions	S	S	S	S	S	S	Deluxe Pull Up Curtains	--	--	--	S	S	--
Hot Water Package (Incl. Water Filter, Outside Shower, Six Gallon DSI Hot Water Heater, Demand Water Pump) (Opt. M: 206ST, 207, 208, SE: 206STSE, 207SE) (Std. M: 205, 227, 228, 228BH, 228D, SE: 228BHSE, 23SCSE, 28TSCSE)	--	S/D*	S/D*	S	S	S	Residential Style Raised Panel Doors	--	--	--	S	S	S	Roof Valances	--	CP	CP	CP	CP	--
Port-a-Potty (M: 206ST, SE: 206STSE, C: 425D HS: T12RB, T12RBS, T12RBBH, T12RBTH, T12DDST, T19QBHW, T21QBHW Only)	--	S*	S*	S*	--	S*	Wood Drawers w/ Full Extension Metal Guides	S	S	S	S	S	S	Storage Net Over One Bunk (HW: N/A HW3ISCTH)	--	S	S	S	S*	--
Residential Flush Toilet in Cabinet (HS: T21TBHW Only)	--	--	--	--	--	S*	Large Clothes Bar	--	--	--	S	S	S	Quilted Top Bed Mattresses	S	S	S	--	--	--
Shower and Cassette Toilet Package Incl. Cabinet w/ Shower, Cassette Toilet and Shower Curtain. (Opt. M: 228, 228BH, 228D, SE: 228BHSE) (Std. M: 205, 246D, SE: 23SCSE, 28TSCSE, C: 625D 627D HW: T19SCHW)	--	S*/D*	S*/D*	S*	--	S*	Hanging Wardrobe	--	--	--	0	0	0	Deluxe Memory Foam Quilted Top Bed Mattresses (HS: T21TBHW Twin Beds Converts to King)	--	--	--	--	--	S*
Hard Wall Shower with Residential Flush Toilet and Monitor for Holding Tanks, Battery and Water Pump Switch	--	--	--	--	S	--	Hanging Pantry	--	0	0	0	0	--	Quilted Top Innerspring Mattresses (HS: T12RB, T12RBS, T12RBBH, T12RBTH Only)	--	--	--	S	S	S*
Hard Wall Shower w/ Residential Flush Toilet (HS: T21DMHW Only)	--	--	--	--	--	S*	USB Charging Ports	--	S	S	S	S	S	Quilted Top 60" x 80" Innerspring Mattresses (HS: T19QBHW, T21QBHW, T21DMHW Only)	--	--	--	--	--	S*
Spray Away Utility Hose (HW: HW3ISCTH Only)	--	--	S	--	S*	--	AM/FM Stereo with CD player	--	--	--	S	S	S	Thermostatically Controlled Heated Mattresses (HS: T12RB, T12RBST, T12RBBH, T12RBTH, T19QBHW, T21QBHW, T21DMHW Only)	SD	SD	SD	SD	SD	S*
Antifreeze Inlet to Bypass Fresh Water Tanks When Winterizing	S	S	S	S	S	S	AM/FM Stereo with CD and DVD player (HW29SC Only)	--	--	--	--	S*	--	Leaf-Spring Axle	S	S	S	--	--	--
Fold Over Galley with Upper and Lower Storage (Std. C: 425D Only)	S	--	--	S*	--	--	Didital Media Receiver w/ Bluetooth, MP3 Player, USB & Aux. Ports	--	--	S	--	--	--	Independent Torsion Axles	--	--	--	S	S	S
Two Burner Free-Standing Range	S	--	--	--	--	--	TV Outlet with Cable and Satellite Hook Up	--	S	S	S	S	S	Easy Lube Axles	--	S	S	S	S	S
Swing Level Galley with Storage (N/A C: 425D, 823D)	--	S	S	S*	--	--	LCD TV (HW29SC Only)	--	--	--	--	S*	--	Spare Tire, Cover and Mount	S	TP	TP	TP	TP	S
Permanently Mounted 3-Burner Indoor Range w/ Stove Cover	--	S	S	--	--	--	30 Amp Detachable Power Cord w/ Storage Bag	--	S	S	S	S	S	12" Radial Tires	S	--	--	--	--	--
							25 Amp Converter w/ Built in Battery Charger	S	--	--	--	--	--	13" Radial Tires w/ Aluminum Wheels (HS: Except T12RBTH, T12RBSOR, T21QBHW, T21TBHW, T21DMHW)	--	S	--	S	--	S*
							35 Amp Converter w/ Built in Battery Charger	--	S	S	S	S	S	14" Radial Tires w/ Aluminum Wheels (Std. HS: T21QBHW, T21TBHW, T21DMHW)(Note: Dual Axle Models HW29SC, HW3ISCTH)	--	--	--	--	S	S*
							12V Safety Breaker	S	S	S	S	S	S	15" Mud Rover Radial Tires, Aluminum Wheels (Std. HS: T12RBTH, (T12RBSOR Only, SE: 206STSE, 207SE, 228BHSE) W/ Shocks (Std. SE: 23SCSE, 28TSCSE Only)(Note: Dual Axle SE: 28TSCSE)	--	--	S*	--	--	S*
							Roof Vent	S	--	--	--	--	--							
							Three Speed Ventilation Fan	--	SD	SD	SD	SD	SD							
							Air Conditioner Wiring Kit	0	0	0	0	0	--							
							10k BTU Cool Cat Heat Pump	--	--	--	--	--	S							
							13.5k BTU Low Profile Air Conditioner (Factory Installed)	--	--	--	--	0	--							
							15k BTU Low Profile Air Conditioner (Factory Installed)	--	--	--	--	0	--							
							20k BTU Forced Air Furnace w/ Electric Ignition	0	0	0	0	0	0							



MODELS	LTD	M	SE	C	HW	HS
Electric Brakes	0	S	S	S	S	S
Slam Latches on Front Trunk Side Doors (C: 823D, 425D, 625D Only)	--	--	--	S*	--	--
EZ Reach Storage with Sliding Tray All Front Trunk Models and Rear O/D Under Bed Storage (HS: T19QBHW, T19SCHW, T21QBHW, T21DMHW)	--	S*	S*	S*	--	S*
28.5" Front Storage Deck w/ 200 # Weight Capacity (Std. F: 228BH, SE: 228BHSE, HS: T12RBBH Only)	--	S*	S*	--	--	S*
54" Frt. Storage Deck w/ 650 # Wt. Capacity (Std. SE: 23SCSE)	--	S*	S*	--	--	--
57" Frt. Storage Deck w/ 650 # Wt. Capacity (Std. HS: T12RBTH)	--	--	--	--	--	S*
105" Front Storage Deck w/ 1300 # Weight Capacity (Std. SE: 28TSCSE, HW: HW3ISCTH Only)	--	S*	S*	--	S*	--
Toyllok Mounted Locking System (M: 228BH, SE: All Models, HW: HW3ISCTH HS: T12RBBH, T12RBTH)	--	S*	S	--	S*	S*
(4) Bike Rack (N/A SE: 23SCSE, 28TSCSE HS: T12RBTH, HW: HW3ISCTH) (Note: HS: T12RB - 2 Bikes only)	0	0*	0*	0	0*	0*
ProRac Systems Permenate Mount Cross bars	--	--	S	--	--	--
ProRac Systems Upright Bike Carrier	--	--	0	--	--	--
ProRac Systems Kayak Carrier	--	--	0	--	--	--
ProRac Systems Load Stops	--	--	0	--	--	--
ProRac Systems Tie Downs	--	--	0	--	--	--
Power Lift System (Std. SE: 23SCSE 28TSCSE)	0	0*	0*	S	S	--
Gas Strut Lift Assist (HS: N/A HW Models)	--	--	--	--	--	S*
Power Roof Lift Assist (HS: T19QBHW, T19SCHW, T21QBHW, T21TBHW, T21DMHW Only)	--	--	--	--	--	S*
Built-in A-Frame Mounting Provision for Equalizer						
Hitch Bar Installation	S	S	S	S	S	S
Battery Box and Wiring Kit	0	S	S	S	S	S
Solar Panel Prep	S	S	S	S	S	S
40 Watt Solar Panel	0	0	0	0	0	0
20 lb. LP Bottle	S	S	S	S	--	--

MODELS	LTD	M	SE	C	HW	HS
Dual 20 lb. LP Bottles with Cover and Automatic LP Regulator (Std. SE: 23SCSE, 28TSCSE Only)	0	0	0*	0	--	--
Dual 20 lb. LP Bottles with Molded Hard Cover and Automatic LP Regulator	--	--	--	--	S	S
Diamond Plated Lower Front Cap	--	--	--	S	S	S
Chrome Diamond Plated Front and Side Skirt	--	--	S	--	--	--
Awning	S	S	S	S	S	--
LED Under Awning Light Strip	--	S	S	S	S	--
Awning/Screen Room	--	--	--	--	--	0
Screen Room w/ Privacy Panels	0	0	0	0	0	--
Outdoor Gas Grill w/ Worktable	0	S	S	S	S	S
Outside Speaker	--	--	S	S	S	S
Patio Light (LTD: 206LTD Only)	S*	CP	CP	CP	S	S
Courtesy Light on Front (M: 228BH SE: 228BHSE 23SCSE, 28TSCSE, HW: HW3ISCTH, HS: All Models)	--	S*	S*	--	--	S
110V Exterior Outlet (206LTD only)	S*	CP	CP	CP	S	S
Black Water Hose Storage	--	--	--	--	S	--
Door Step	S	TP	--	TP	--	S*
Double Door Step (SE: All Models, HW: All Models, HS: T12RBTH, T12RBSXR, T21QBHW, T21TBHW, T21DMHW)	--	--	TP	--	TP	S*
One Piece Screen Door	--	S	S	S	S	--
Vented Entrance Door Window w/ Screen	--	--	--	--	--	S
Folding Grab Handle	--	S	S	S	S	S
Exterior Graphic Design	S	S	--	S	S	S
Travel Pack (Incl. Spare Tire, Tire Bracket, Tire Cover, Installed Step)	--	0	0	0	0	--
Convenience Pack (Incl. Privacy Curtains, Roof Valances, A/C Bracing, Patio Light, 110V Exterior Outlet)	--	0	0	0	0	--
STANDARD CONSTRUCTION FEATURES						
Completely Enclosed Living Area	--	--	--	--	--	S
Fiberglass Vacuum Bonded Roof with Metal Interior Roof	--	--	--	--	--	S

MODELS	LTD	M	SE	C	HW	HS
Large Rear Roof Tinted Sky Light with Shade	--	--	--	--	--	S
Two Front Roof Tinted Windows with Shades	--	--	--	--	--	S
Fiberglass Vacuum Bonded Radius Roof w/ No Center Seam	S	S	S	S	S	--
Steel Air Conditioner Reinforcing Laminated Into Roof	S	CP	CP	CP	S	--
CP 3-Stage Double Arm Lifter Posts	S	S	S	S	S	--
Smooth Oyster Fiberglass Vacuum Bonded Exterior w/ Black Accents	--	--	--	--	S	S
Lower Door Operational in Closed Position	S	S	S	S	S	--
Five Piece Sectionalized Vinolon Supreme Tenting	S	S	S	S	S	--
Tent Permanently Attached on Bunk Ends and Slide Out	S	S	S	S	S	--
Plywood Bunk Ends	S	S	S	S	S	--
Full Perimeter Aluminum Bed Frames	S	S	S	S	S	--
Easy Glide Scissor Pole Bed Supports	--	S	S	S	S	--
Powder Coated Rafter Poles and Bed Bows	S	S	S	S	S	--
Tinted Vinyl Windows	S	S	S	S	S	--
Large, Opening Picture Window	--	--	--	--	--	S
One Piece Undercoated Structure Wood Floor	S	S	S	S	S	S
Powder Coated Tubular Steel Frame	S	S	S	S	S	S
Rear Crank Down Stabilizer Jacks w/ Sand Pads	S	--	--	--	--	--
(4) E-Z Crank-Down Stabilizer Jacks w/ Sand Pads	--	S	S	S	S	S
Seamless, High Density Polyethylene Wheel Wells	S	S	S	S	S	S
11 Gallon Fresh Water Tank	S	--	--	--	--	--
Under Floor 20 Gallon Fresh Water Tank	--	S	S	S	S	S
12 Gallon Gray Water Holding Tanks	--	--	--	--	--	S
12 Gallon Black Water Holding Tank	--	--	--	--	--	S
2000 lb. Tongue Jack w/ Swivel Wheel	S	S	S	S	S	S
Power Front Jack	--	--	--	--	0	0
7-Way Pigtail Plug	S	S	S	S	S	SS

LTD = LIMITED, M = MAC, SE = SPORTS ENTHUSIAST PACKAGE, C = CLASSIC, HW = HIGH WALL, HS = HARD SIDE

S = STANDARD, SO = STANDARD OPTION, 0 = OPTIONAL, -- NOT AVAILABLE, TP OR CP = OPTION PACKS, * = SELECTED MODELS



PRE-DELIVERY INSPECTION FACILITY

20,000 square feet of quality assurance. The bare essentials for a premium product. This state-of-the-art facility gives immediate daily feedback to production for quality assurance in every unit built.



Forest River, Inc. encourages our customers to purchase their Forest River products from a local dealership whenever possible for the following reasons:

- 1) Forest River, Inc. dealers are independently owned and operated businesses so priority service and scheduling is at their discretion and is often provided to customers that purchased their unit at that dealership.
- 2) Purchasing locally allows customers to establish meaningful relationships with a dealer, enhancing the RV experience through assistance with product questions, user tips or RV regulations for your state or country, and much more!
- 3) Canadian customers must meet requirements to bring an RV purchased out of the country to their home. These requirements may involve additional inspections and certifications, taxes and fees. Your local Canadian Dealer is a professional at meeting these requirements.
- 4) Scheduling timely warranty repairs and adjustments through a local dealership provides far greater flexibility and convenience to you, the customer!

It is the goal of Forest River, Inc. that all of our RV owners fully enjoy the RV experience and that customer satisfaction meets or exceeds their expectations!

24/7 EMERGENCY ROADSIDE ASSISTANCE

For a worry-free ownership experience

Forest River includes one

year of Coach-Net RV Technical & Roadside Assistance with each RV purchase. Whether new to the RV lifestyle or an experienced RV enthusiast, Forest River owners have 24/7 access to technical, operational and emergency road service coverage throughout the US & Canada.

Coach-Net's fast, dependable service is just a phone call away.

Coach-Net®
RV Technical & Roadside Assistance



Specification Definitions

GVWR (Gross Vehicle Weight Rating) - is the maximum permissible weight of the unit when fully loaded. It includes all weights, inclusive of all fluids, cargo, optional equipment and accessories. For safety and product performance do NOT exceed the GVWR.

GAWR (Gross Axle Weight Rating) - is the maximum permissible weight, including cargo, fluids, optional equipment and accessories that can be safely supported by a combination of all axles.

UVW (Unloaded Vehicle Weight) - is the typical weight of the unit as manufactured at the factory. It includes all weight at the unit's axle(s) and tongue or pin and LP Gas. The UVW does not include cargo, fresh potable water, additional optional equipment or dealer installed accessories.

*Estimated average based on standard build optional equipment.

CCC (Cargo Carrying Capacity)** - is the amount of weight available for fresh potable water, cargo, additional optional equipment and accessories. CCC is equal to GVWR minus UVW. Available CCC should accommodate fresh potable water (8.3 lbs per gallon). Before filling the fresh water tank, empty the black and gray tanks to provide for more cargo capacity.

** Estimated average based on standard build optional equipment

Each Forest River RV is weighed at the manufacturing facility prior to shipping. A label identifying the unloaded vehicle weight of the actual unit and the cargo carrying capacity is applied to every Forest River RV prior to leaving our facilities.

The load capacity of your unit is designated by weight, not by volume, so you cannot necessarily use all available space when loading your unit.



LOOK FOR OUR OTHER POPULAR LINES OF FLAGSTAFF CAMPING TRAILERS.



Super Lite TT & FW, Super V, Micro Lite & Shamrock



V-Lite, Classic Super Lite TT & FW

FLAGSTAFF

WARRANTY

FOR DETAILS ON FLAGSTAFF'S COMPLETE WARRANTY PROGRAM, SEE YOUR FLAGSTAFF DEALER. When it comes to backing products with the same quality and commitment it does when it begins the manufacturing process, the only name you have to remember when you're looking for a recreational vehicle is Flagstaff. Flagstaff offers the following additional limited warranties to the original purchasers. Consult written warranty for details.

1. Five-year roof warranty,
2. Twenty-five-year floor warranty,
3. Five-year frame warranty,
4. Five-year tent warranty,
5. Five-year warranty on torsion axle suspension,
6. Limited lifetime warranty of lifter system,
7. One-year bumper to bumper. Ask your dealer about the available lifetime structural warranty.



Learn More

Scan this barcode using a QR Reader on your smart phone to learn more about Forest River.



A Berkshire Hathaway company.

201 WEST ELM MILLERSBURG, IN 46543 WWW.FORESTRIVERINC.COM/ROCKWOOD 574.642.2640

YOUR FLAGSTAFF DEALER

All information contained in this brochure is believed to be accurate at the time of publication. However, during the model year, it may be necessary to make revisions and Forest River, Inc., reserves the right to make all such changes without notice, including prices, colors, materials, equipment and specifications as well as the addition of new models and the discontinuation of models shown in this brochure. Therefore, please consult with your Forest River, Inc., dealer and confirm the existence of any materials, design or specifications that are material to your purchase decision. Litho. U.S.A. P / W: 2015.10.05